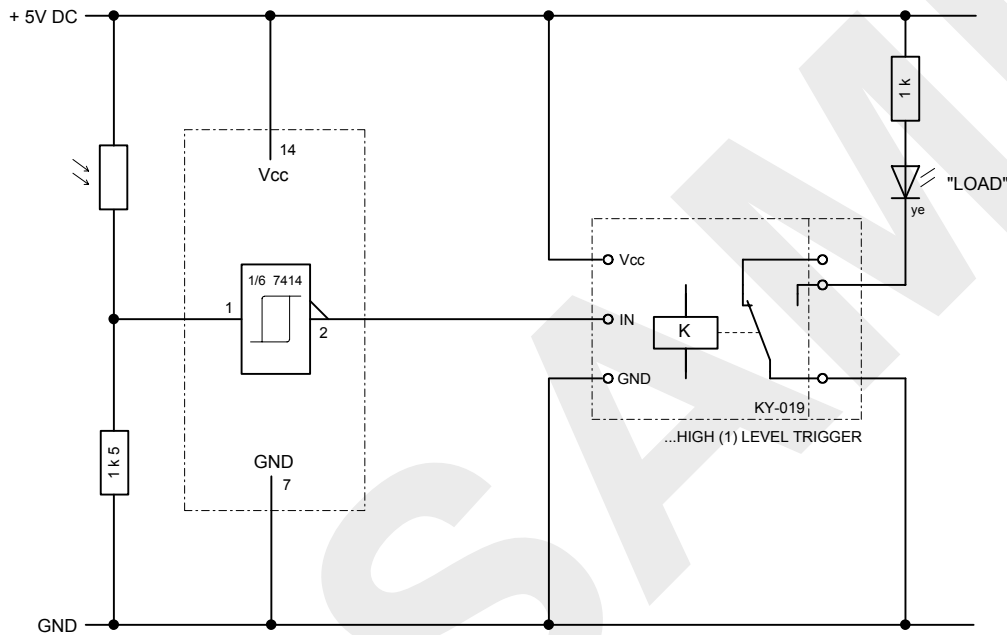
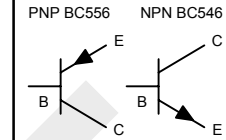


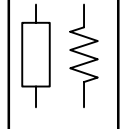
5 VDC RELAY MODULE KY-019, ON / OFF FUNCTION, PHOTO ELECTRIC (TWILIGHT) SWITCH CONTROLLED BY TTL SCHMITT-TRIGGER



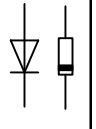
TRANSISTOR



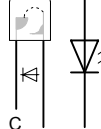
RESISTOR:



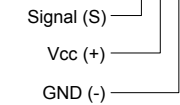
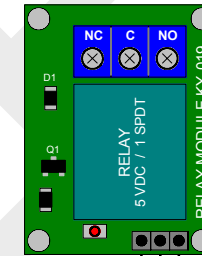
DIODE:



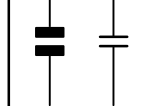
LED:



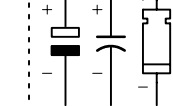
5V RELAY MODULE KY-019:



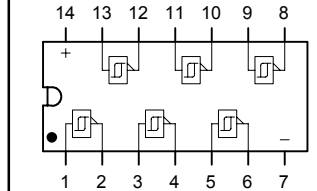
CAPACITOR:



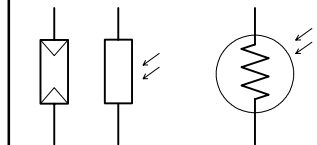
(POLARIZED)



TTL SCHMITT-TRIGGER INVERTER SN7414



LDR:



LIGHT DEPENDENT RESISTOR (LDR):



FOR FULLY COMPONENT SPECS. SEE MANUFACTURER DATASHEET

RY-3	A4	udo@elgers.com	ue-ERT20220203-15	03-FEB-2022
019	A	RELAY MODULE KY-019 - EXPERIMENT 15		