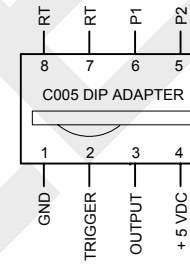
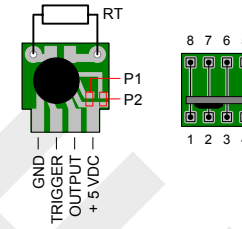
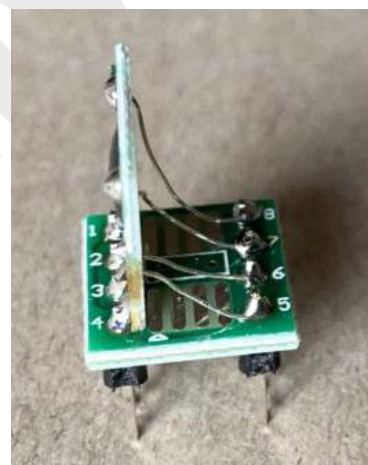
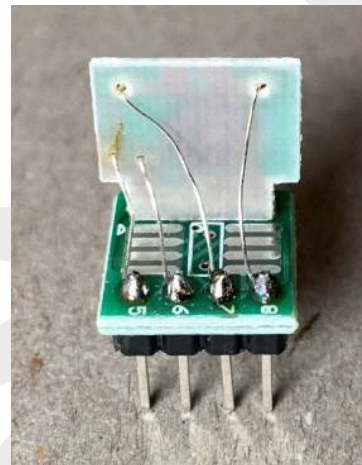
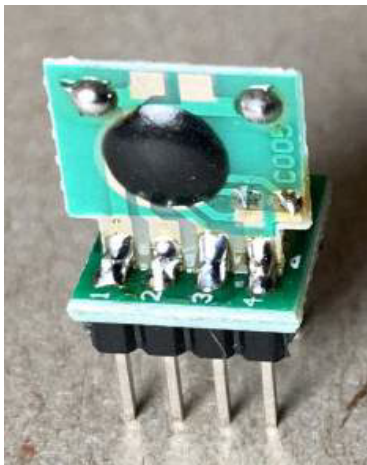
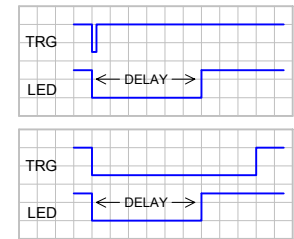
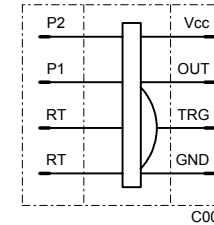


TIMER MODULE C005:



TIME PERIODE (T)		
RT	3 V	4,5 V
10 k	5,8 s	4,8 s
20 k	8,9 s	8,0 s
30 k	12,1 s	11,4 s
51 k	19,2 s	18,0 s
75 k	26,5 s	25,0 s
100 k	34,0 s	32,0 s
150 k	49,0 s	46,0 s
200 k	65,0 s	60,0 s
240 k	78,0 s	74,0 s
300 k	96,0 s	92,0 s
390 k	123 s	119 s
510 k	155 s	150 s
560 k	175 s	168 s
620 k	199 s	187 s
750 k	230 s	222 s
820 k	255 s	246 s
1.0 M	330 s	291 s
1.5 M	383 s	432 s
2.0 M	598 s	568 s
3.0 M	762 s	762 s
4.7 M	1425 s	1131 s
5.1 M	1631 s	1331 s
10 M	2921 s	2621 s
15 M	4394 s	3813 s
20 M	5160 s	4660 s
22 M	7052 s	6452 s

TIME DELAY JUMPER SETTING	
P2	<input type="radio"/>
P1	<input type="radio"/>
= T x 1	
P2	<input type="radio"/>
P1	<input checked="" type="radio"/>
= T x 8	
P2	<input checked="" type="radio"/>
P1	<input type="radio"/>
= T x 64	
P2	<input checked="" type="radio"/>
P1	<input checked="" type="radio"/>
= T x 512	



FOR FULLY COMPONENT SPECS. SEE MANUFACTURER DATASHEETS

FIGURES ARE APROXMIATELY, DUE TO COMPONENT TOLERANCES !

MD-2	A4	udo@elgers.com	ue-ERT20210904-08	04-SEP-2021
	A	DIY UE-016 TIMER MODULE C005		