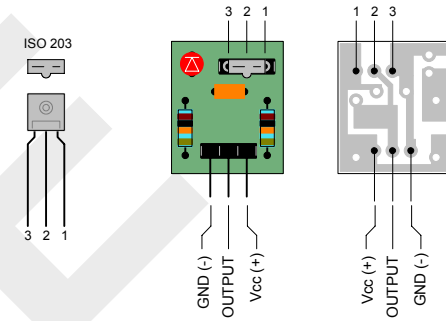
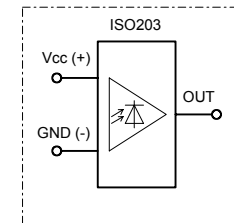


LASER RECEIVER ISO203 MODULE:



SUPPLY VOLTAGE: 2.7 5.5 VDC
 MAX. SINK LOAD CURRENT: 30 mA
 WAVELENGTH: 400 1100 nm

NOTE:
 ABOVE MODULE PCB IS IN USE FOR "ISO 203" LIGHT SENSOR,
 AND ALSO FOR "DS18B20" TEMPERATURE SENSOR.



<p>CAUTION</p> <p>LASER RADIATION</p> <p>DO NOT STARE INTO BEAM</p>	<p>LASER PROTECTIVE EYEWEAR REQUIRED</p>
	<p>FOR FULLY COMPONENT SPECS. SEE MANUFACTURER DATASHEETS</p>

MD-1	A4	udo@elgers.com	ue-ERT20211017-01	17-OCT-2021
	A	LASER RECEIVER ISO203 MODULE		