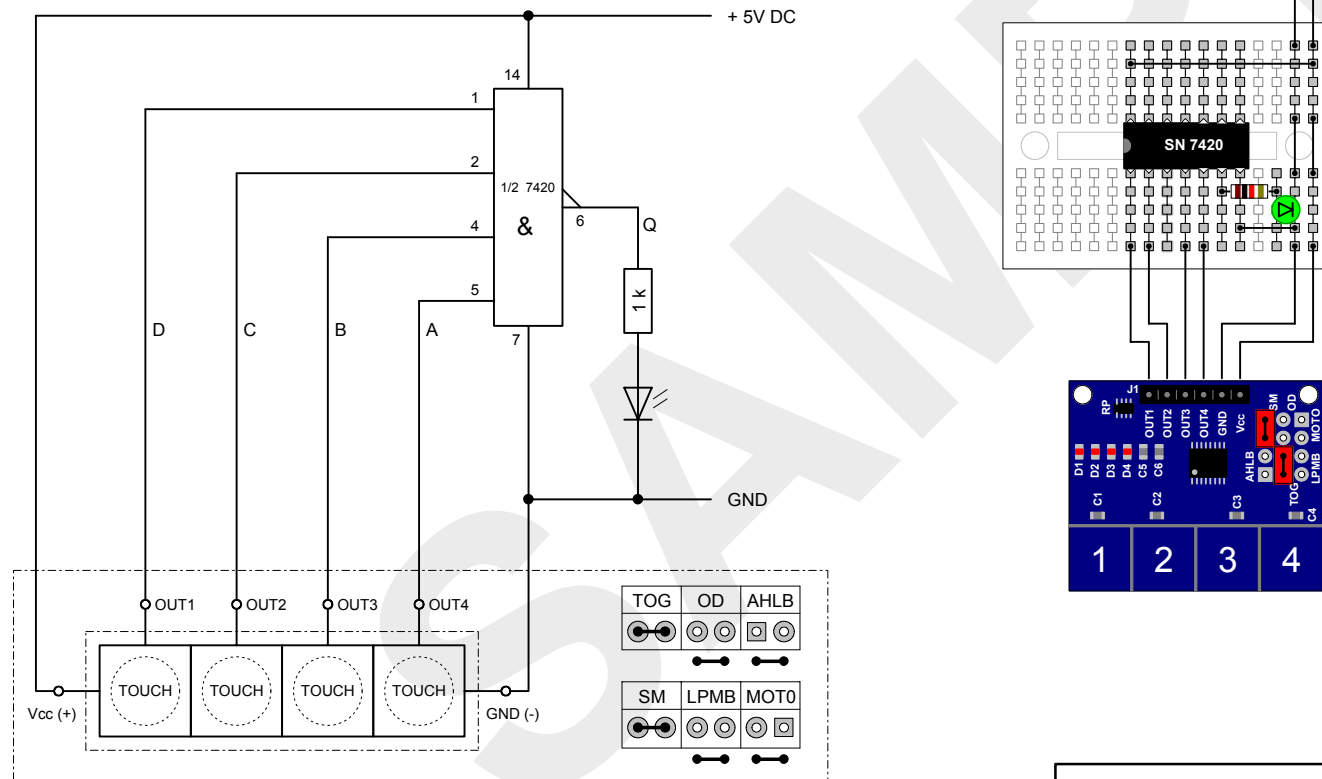
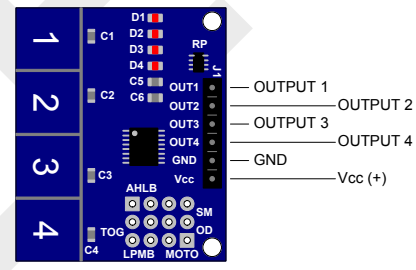


TTP224 CAPACITIVE TOUCH SENSOR CIRCUIT OPERATING 4-INPUT TTL NAND GATE



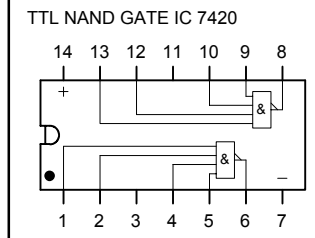
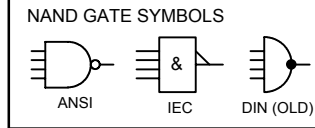
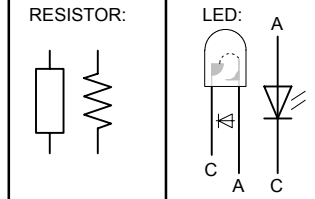
TOG	OD	AHLB	OUTPUT CONFIGURATION - JP
<input type="checkbox"/>	<input type="checkbox"/>	<input type="checkbox"/>	TOGGLE MODE POWER ON STATE = 0
<input type="checkbox"/>	<input type="checkbox"/>	<input checked="" type="checkbox"/>	TOGGLE MODE POWER ON STATE = 1
SM	<input checked="" type="checkbox"/>		SINGLE - KEY OPERATION MODE
MOTO	<input type="checkbox"/>		DISABLE MAXIMUM KEY ON TIME
LPMB	<input type="checkbox"/>		LOW POWER MODE



SN 7420 TRUTH TABLE

	D	C	B	A	Q
0	0	0	0	0	1
1	0	0	0	1	1
2	0	0	1	0	1
3	0	0	1	1	1
4	0	1	0	0	1
5	0	1	0	1	1
6	0	1	1	0	1
7	0	1	1	1	1
8	1	0	0	0	1
9	1	0	0	1	1
10	1	0	1	0	1
11	1	0	1	1	1
12	1	1	0	0	1
13	1	1	0	1	1
14	1	1	1	0	1
15	1	1	1	1	0

0 = LOW "LED OFF"
 1 = HIGH "LED ON"
 A, B, C, D = INPUT
 Q = OUTPUT



FOR FULLY COMPONENT SPECS. SEE MANUFACTURER DATASHEETS

CT	A4	udo@elgers.com	ue-ERT20210130-03	30-JAN-2021
010	A	TTP224 - EXPERIMENT 07		